

South Park Road Wimbledon, SW19 8ST

£485,000 Leasehold - Share of Freehold



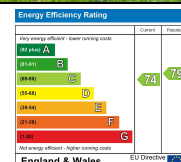
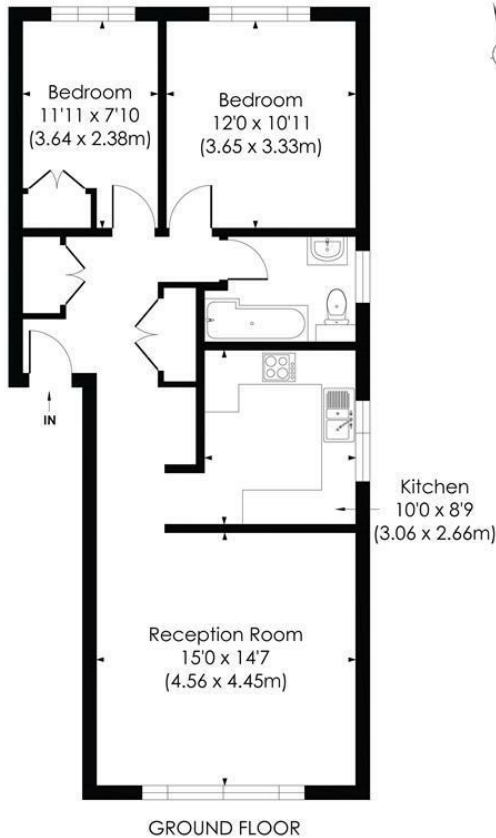
A superb two bedroom ground floor purpose-built apartment offered to the market with no onward chain and share of freehold ownership, fantastically positioned in the 'South Park' area of Wimbledon and located only a stone's throw away from Wimbledon High Street.

This spacious flat comprises a southern aspect open-plan reception, kitchen, three-piece family bathroom and two bedrooms, with communal gardens at the rear.

Situated in an incredibly convenient and desirable central Wimbledon location only 500 metres from Wimbledon Mainline Train Station, and in close proximity distance to both Haydons Road Thameslink and South Wimbledon Northern Line Tube. Next to an abundance of amenities, shops, bars and restaurants for SW19 with the picturesque South Park Gardens nearby as well as Outstanding Primary Schools. With the long lease in excess of 900 years, this is a brilliant first time purchase or buy to let investment.

SOUTH PARK ROAD, SW19

Approx. Gross Internal Floor Area
747 Sq. ft/69.39 Sq. m



© Pixangle Property Marketing Ltd. info@pixangle.com Tel: 0208 870 2118
 This floor plan has been prepared for the purpose of illustration only in accordance with the latest RICS code of measuring practice and is not to scale. All measurements and areas are approximate and whilst every effort has been made to ensure the accuracy of the plan contained here, no responsibility is taken for any error, omission or misstatement.

- Ground Floor Two Bedroom Purpose-Built Apartment
- Open-Plan Reception
- Communal Gardens
- Superb Central Location in Wimbledon
- Close Proximity to Multiple Transport Links
- No Onward Chain
- Share of Freehold - 990 years remaining
- Annual Service Charges - £176.92, Annual Ground Rent - Nil
- EPC Rating - C
- Merton Council Tax Band - D

For Free Mortgage Quote and Best Mortgage Rates, call an Ellisons Mortgage Advisor on 020 8944 9494



Although these particulars are believed to be correct, their accuracy is not guaranteed and they do not form part of any contract.

Celebrating 30 years of successful Sales and Lettings in Merton

